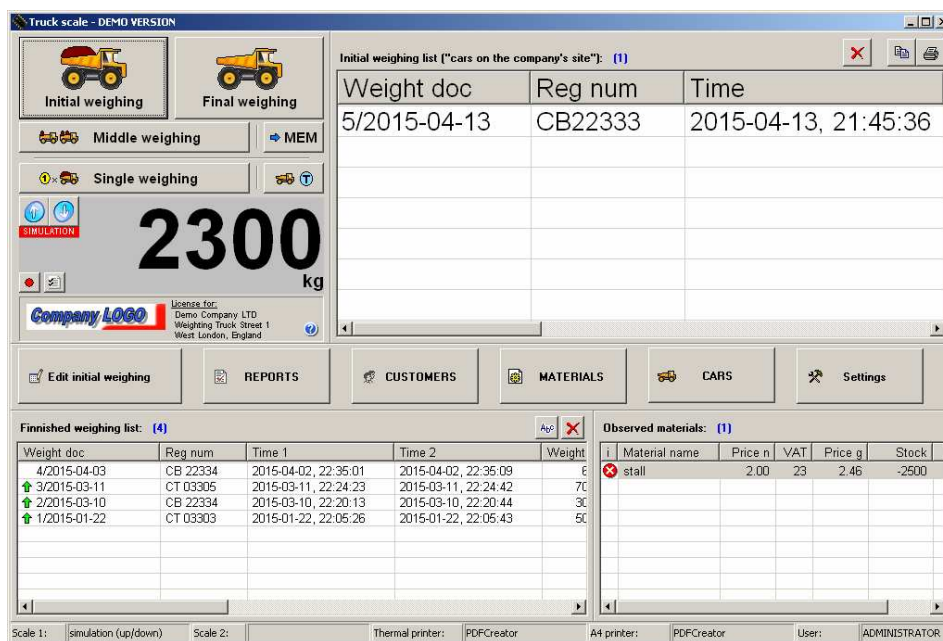


Software for scales .com

Truck-scale Software documentation version 4.13



www.softwareforscales.com

office@softwareforscales.com

TABLE OF CONTENTS

1	GENERAL DESCRIPTION.....	3
2	WEIGHING SCENARIOS	4
2.1	INITIAL WEIGHING.....	4
2.2	FINAL WEIGHING.....	6
2.3	SINGLE WEIGHING.....	7
2.4	CAPTURING CAR TARE	8
3	REPORTING	9
4	CONFIGURATION	10
4.1	USERS AND PERMISSIONS	10
4.2	SCALE CONNECTION	10

1 General description

The software for the truck scales allows you to display, save and report the weight measurements of the cars.

The program performs the "real-time" communication with the truck scale and displays the current weight on the screen.

The scale operator (the program user) captures weights and describes them in the weighing document. The approved weighing document can be previewed and printed in one or more copies on the PC printer or the thermal printer.

The program provides reporting functionality including advanced filters, printing options and exporting data to the clipboard, text or Excel file.

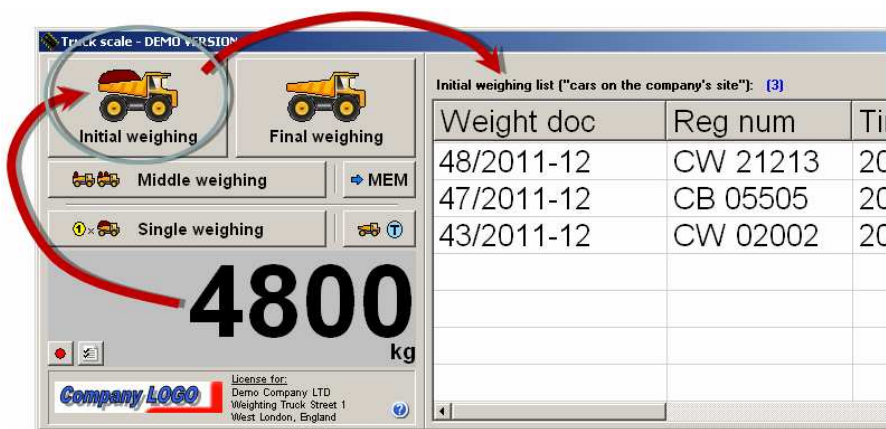
By means the program various weighing scenarios can be performed:

- double weighing, consisting of two vehicle weight measurements:
 - initial weighing (first)
 - final weighing (last)
- single weighing, consisting of one vehicle weight measurement (the car tare may be taken from the database or entered manually)
- multiple weighing, consisting of three or more vehicle weight measurements:
 - initial weighing (first)
 - interim weighing (one or more)
 - final weighing (last)

2 Weighing scenarios

2.1 Initial weighing

Initial and final weighing is used when double weighing scenario is performed. One of the weighing will be recognized as an empty car weighing (car tare weight) and the other weighing will be recognized as a filled car weighing (gross weight). While the final weighing the software will automatically calculate the material weight (net weight) by subtracting car tare from the gross weight.



To perform initial weighing press [Initial weighing] button. The current scale weight is captured and the weighing document window is opened. User enters information about the weighing:

- car registration number
- driver information
 - if the car was already weighed in the past then the driver field is filled automatically by the last driver associated with the car
- material information
 - material information fields can be typed manually or can be selected from the material list by pressing button [Select material]
 - depending on the program settings the material information is obligatory or not
- customer information
 - customer information fields can be typed manually or they can be selected from the customer list by pressing button [Select customer]
 - if the car was already weighed in the past then the customer fields are filled automatically by the last customer information associated with the car

- depending on the program settings the customer information is obligatory or not
- transport information
 - transport information fields can be typed manually or can be selected from the customer list by pressing button [Select customer]
 - transport information is not obligatory
- additional information
 - user can fill additional fields about the weighing like box name, destination city or information
 - additional are not obligatory
- depending on the program settings the user can change the captured weight and the time of the weighing or not

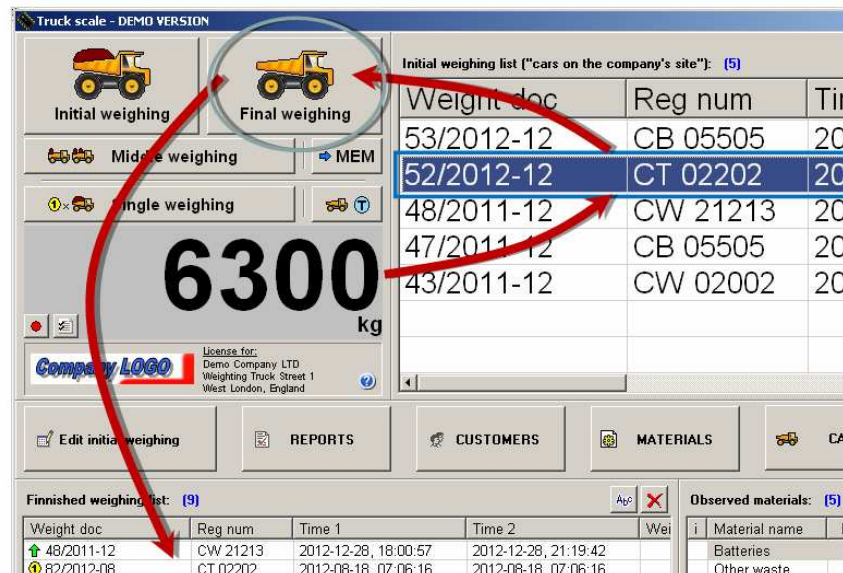
All obligatory fields are marked with the red star.

Above fields do not have to be filled while initial weighing, because they will be possible to modify (and finally accept) while final weighing.

After accepting the initial weighing the information about weighing appears on the "Initial weighing list (cars on the company's site)".

2.2 Final weighing

To perform final weighing select the initial weighing from the "Initial weighing list" and press [Final weighing] button. If there is only one initial weighing available then the selecting initial weighing is not needed.



The current scale weight is captured and the weighing document window is opened. User have possibility to finally edit the same information about the weighing as it was described in the initial weighing (see chapter 2.1). Additionally, while the final weighing:

- the software automatically calculates net weight value
- the software automatically recognize weight type: loading or unloading
- the software automatically calculates the material price
- depending on the program settings the user can change the captured weight and the time of the weighing or not

After accepting the initial weighing the weighing document is previewed.

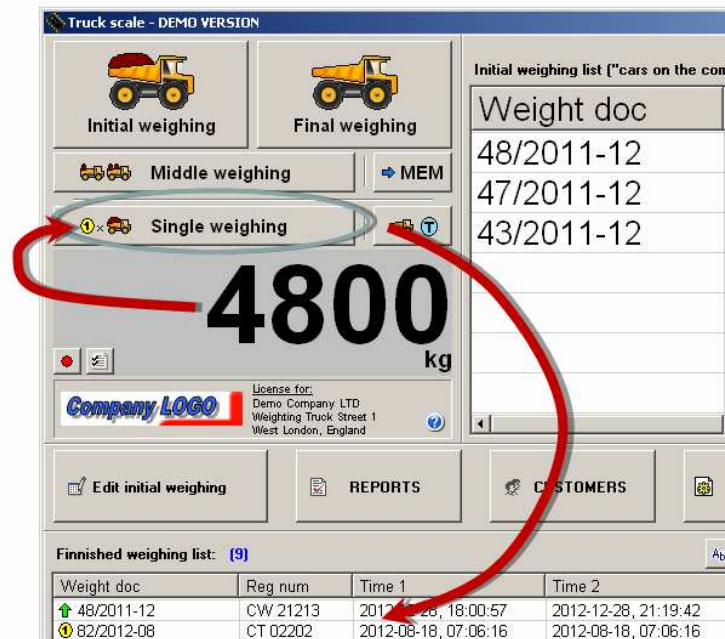
User can change the printing format of the document:

- print 1 or 2 documents on 1 page (default value is configurable in the program settings)
- print material prices or not (default value is configurable in the program settings)
- print 1 or 2 pages
- accept the weighing without printing document (document can be printed later from the report window)

After accepting the final weighing the information about initial weighing is moved from the "Initial weighing list" to the "Finished weighing list".

2.3 Single weighing

While single weighing scenario only one weighing (gross weight) is performed. The car tare can be entered manually or taken automatically based on the car registration number and previously saved information (see chapter 2.4). After filling tare information the software will automatically calculate the material weight (net weight) by subtracting car tare from the gross weight.



To perform single weighing press [Single weighing] button. The current scale weight is captured and treated as a gross weight. The weighing document window is opened. User enters the same information about the weighing as it was described in the initial weighing (see chapter 2.1). Additionally, while the single weighing:

- car tare field can be entered
- car tare field can be manually by pressing button [change tare]
- car tare field can be taken from the previously saved information (based on the car registration number, see chapter 2.4) by pressing "T blue circle" button
- depending on the program settings the car tare can be filled automatically after entering car registration number

After accepting the single weighing the information about weighing appears on the "Finished weighing list".

2.4 Capturing car tare

The program gives possibility to associate the car tare value with the car registration number. The car tare information can be used later while the single weighing scenario to automatically calculate net weight (see chapter 2.3).



To capture car tare press the “*T blue circle*” button on the main screen. The current scale weight is captured and the car registry window opens. From that moment the information about car tare will be remembered and used any time while the single weighing.

3 Reporting

The user have possibility to report finished weightings by pressing [Report] button.



The reporting feature allows to lists all finished weightings according to the filtering criteria such as:

- time range (day from – day to)
- material filter (whole name or part of the name)
- customer filter (whole name or part of the name)
- driver name
- car registration
- weighing type: loading / unloading / all

The report can be printer or exported to the text file or exported to the Excel file.

From the reporting window user can also print or edit any historical weighing document.

4 Configuration

The configuration window is available by pressing the [Settings] button on the main screen. Only the Administrator user is permitted to modify the configuration.



4.1 Users and permissions

When starting the program user have log-in to the program by selecting his name from the list of users and type a password. In the program there is always one special user called "Administrator".

The default administrator password is: 123

Administrator is the only user who is allowed to change the program configuration including adding or removing users and setting password for them.

Administrator can also set permissions for other users like:

- deleting weighting
- editing weight value
- editing material table
- editing customer table

Users permissions are configurable by selecting [Security] tab.

4.2 Scale connection

The RS232 connection with the scale is configurable by selecting [Connection] tab.